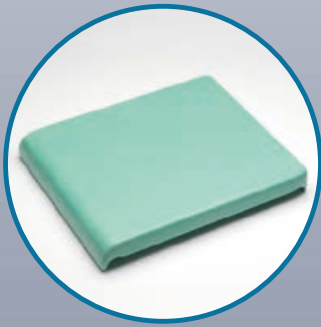
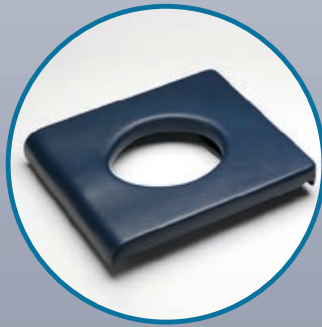


# Additional options for RCN Shower and Commode Chair range SC 100 and SCC 250



**PUS** Plain soft seat made of PUR-foam



**PS** Soft seat made of PUR-foam with toilet opening



**PSE** Insert for soft seat PS



**PP** Soft seat with toilet and hygiene opening, made of PUR-foam



**PPE** Insert for soft seat PP



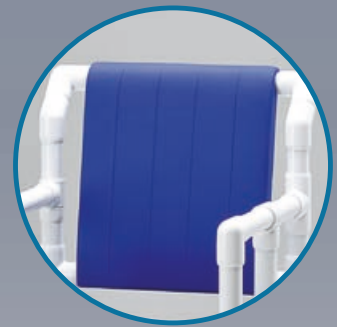
**PZ** Soft split seat made of PUR-foam



**SP** Seat cushion on plastic plate, with foam core and cover made of coated fabric  
These cushions must be taken off prior to showering



**RP** Backrest cushion, snaps on to frame, with cover made of coated fabric



**PR** Soft backrest made of PUR-foam



**SB** Safety-bar



**ASA** Swing-out armrest on the right, by request on the left or on both sides **2ASA**



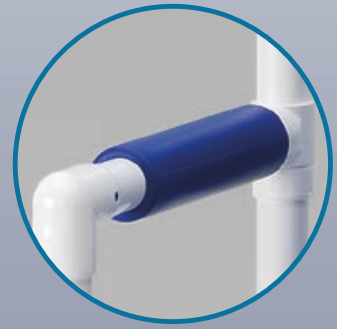
**HV** Height adjustment to adapt seat height and clearance to 5 levels (7 levels on chairs without ASA)



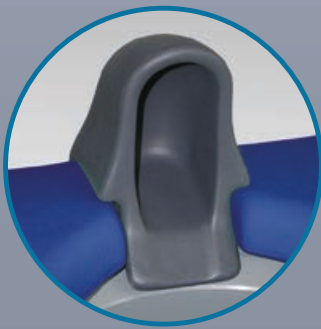
**GR** Push-bar



**KS** Headrest 3D adjustable



**AP** Armrest pad,  
made of PUR-foam



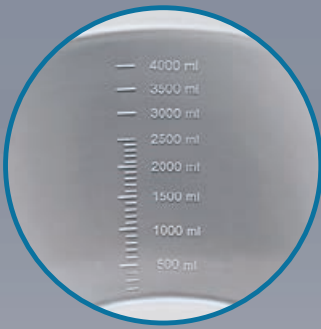
**UR** Splash protector made of  
PUR-foam, fits all PP seats



**DRS** Anti-slide, flips down  
and can be taken off



**SG** Safety-belt,  
continuous adjustment,  
easy to attach on frame



**TK** Second pail,  
handle upon request



**NH** Slant seat, 3 cm lower in back



**AKA** Anti-tip frame for  
very agitated users



**FT** Slide-out, anti-tip  
footrest



**MFT** Roll-along footrest



**ER** Ø 100 mm single-wheel  
never rust caster - locking